

**BAE SYSTEMS****BAE  
SYSTEMS**

---

**ABOUT BAE SYSTEMS**

BAE Systems is a world-leading shipbuilding, support and maintenance company with the skills and expertise to design, build, integrate, test, commission and support complex warships. The multinational company employs over 93,000 people in around 40 countries. They have a strong track record of collaborating with customers and local partners to develop, engineer, manufacture, and support products and systems to deliver military capability, protect national security, and secure critical information and infrastructure.

---

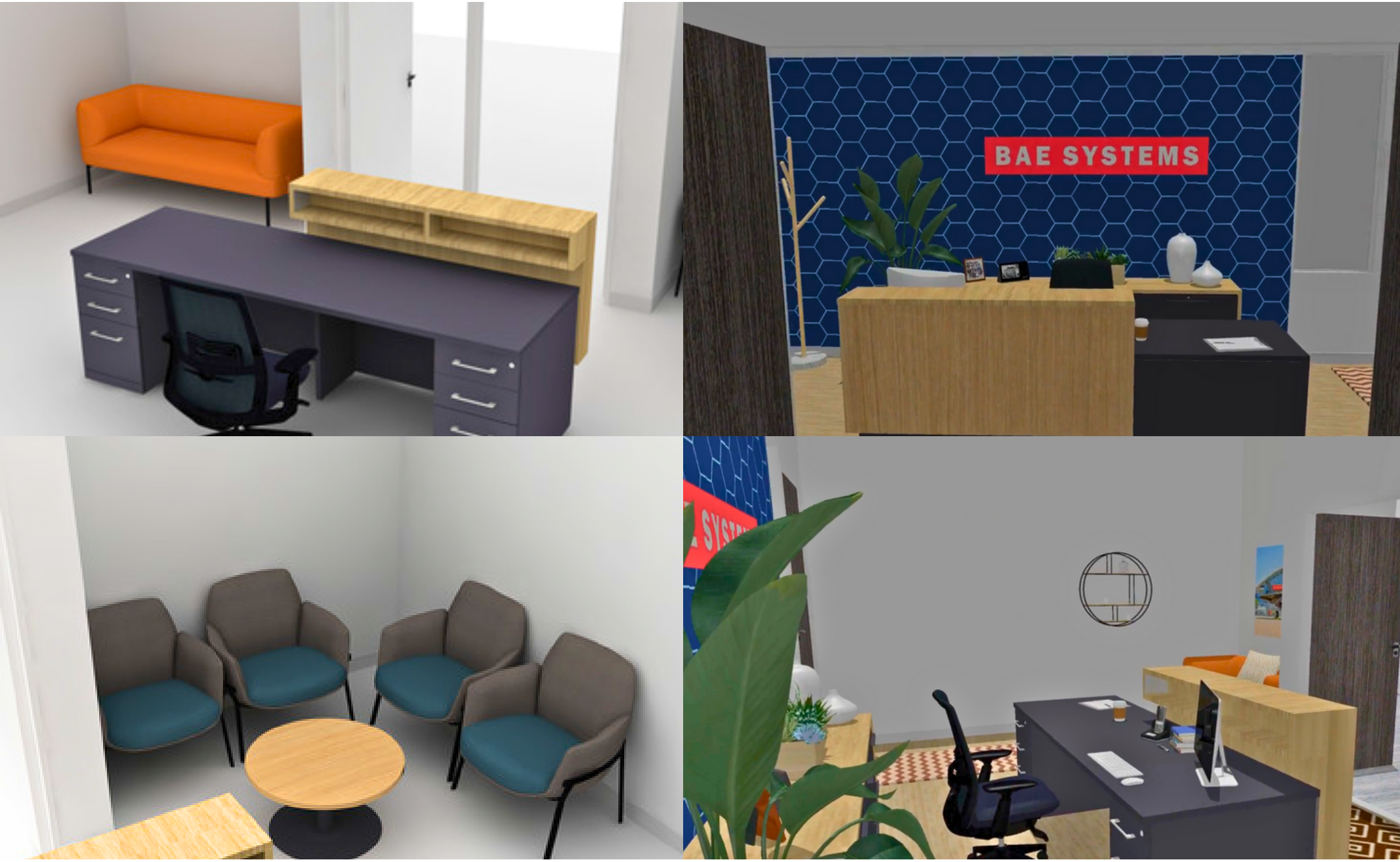
With decades of industry-leading innovation in technology-led defence, aerospace and security solutions, UK-based conglomerate BAE Systems is helping countries grow their naval and industrial capabilities. The Canadian branch of the company had been based out of Ottawa and Ontario until 2023 when BAE Systems decided to expand its operation to Nova Scotia and move into a new space at the Irving Blue Nose Building, next door to Mic Mac Mall. Set to house roughly 60 team members in the class-A office development, the new headquarters allowed BAE Systems to reconsider its working environment and corporate aesthetic ideals. The result: a sprawling 12,000-square-foot office space with ample opportunities for future expansion and a sense of visual coherence across its rooms.

Working with Office Interiors consultants and in-house workspace planner April Doucet, BAE Systems selected the Haworth brand for its constellation of products, designers, and brands, which could answer every possible design requirement together.





An eclectic assortment of furniture and materials from Haworth resulted in a layered office space that still maintained a sense of aesthetic unity. The breadth of the Haworth catalogue—which includes [Haworth Immerse](#), [Masters Series](#), [X-Series](#) and more —allowed for the creation of workstations, private offices, and flexible spaces that all shared the underlying ethos of good design. In designing the space, BAE Systems focused on introducing leading-edge technology, reducing its spatial footprint, and incorporating more collaborative spaces.



## The Reception Area

The Office Interiors team took on the challenge of working with an empty floorplan, relying on in-house workspace planner April Doucet and Senior Account Manager Jamie Goddard to take the lead. The departure from the usual process of collaborating with a design firm allowed for a new level of creativity and a fresh perspective on this project.

The Office Interiors team designed an entry space to create an inviting welcome for guests and BAE Systems employees. A [Haworth Masters Series](#) desk, distinguished by its cantilevered cushioned storage shelf and meticulous craftsmanship, makes an elegant focal point in the reception area. The desk also does double duty as an impromptu conversation and waiting area, thanks to its location facing the seating area featuring an amber [Haworth Cabana Lounge Sofa](#) and sea-blue [Poppy Lounge Chairs](#).





## Meeting Rooms

Immerse Conference Tables with built-in storage, Planes Credenzas, and Very Task Chairs come together to form two conference rooms that double as informal meeting spaces.



## The Visualization Room

In line with BAE Systems' global presence across more than 40 countries, creating a space for the seamless facilitation of collaborative video conferencing between offices and the visualization of intricate ship designs became imperative. This state-of-the-art visualization room is a testament to technology and luxury, setting a new standard for contemporary workspaces.



The front wall of this room is adorned with sleek, expansive panels to create a video wall. This remarkable feature transforms the room into an immersive visual canvas, where every detail can be appreciated on a grand scale.

Within this space is a collection of 32 Poppy Conference Chairs, each equipped with tablets to ensure team members can maintain an uninterrupted line of sight to the expansive screen, fostering engagement and collaboration at its finest.

A Compose Echo work desk with screens and a Soji Task Chair is placed closest to the screen designated for the speaker, enhancing the overall experience of presentations and discussions.





## Open Workstations

At the heart of the floorplan, the Office Interiors team placed 48 workstations with approximately 49 primary seats using [Haworth's Upside Height Adjustable Desks](#) and [Soji Task Chairs](#). The height-adjustable desks were selected to support physical activity and personalized adjustability throughout the day.

To keep the workstations open while allowing a sense of privacy for head-down work, the team selected [Belong Privacy Screens](#)—a low-profile option— with [Be\\_Hold Cabinets](#) for personal storage. A minimalist aesthetic reinforces the company's design ethos by contrasting dark walls on the storage cabinets and wood laminate tables.

Along one wall, a double-layered structure of [X-Series Storage Cabinets](#) provides an additional layer of practicality, offering abundant storage options while ensuring that the open workstation area remains impeccably organized and uncluttered.



## Private Offices

The Office Interiors project team created an ecosystem of varied spaces around the open workstation area, including six private offices and breakout rooms (we will cover this in the next section).

In the private offices, behind grey powder-coated glass-panel frames, [Masters Series](#) desks with a wood veneer and matching pedestals for storage exude an aura of tranquillity and elegance, setting the stage for focused work and meetings. A round [Jive Table](#) and a pair of swivel [Poppy Guest Chairs](#) create an additional setting for small gatherings.



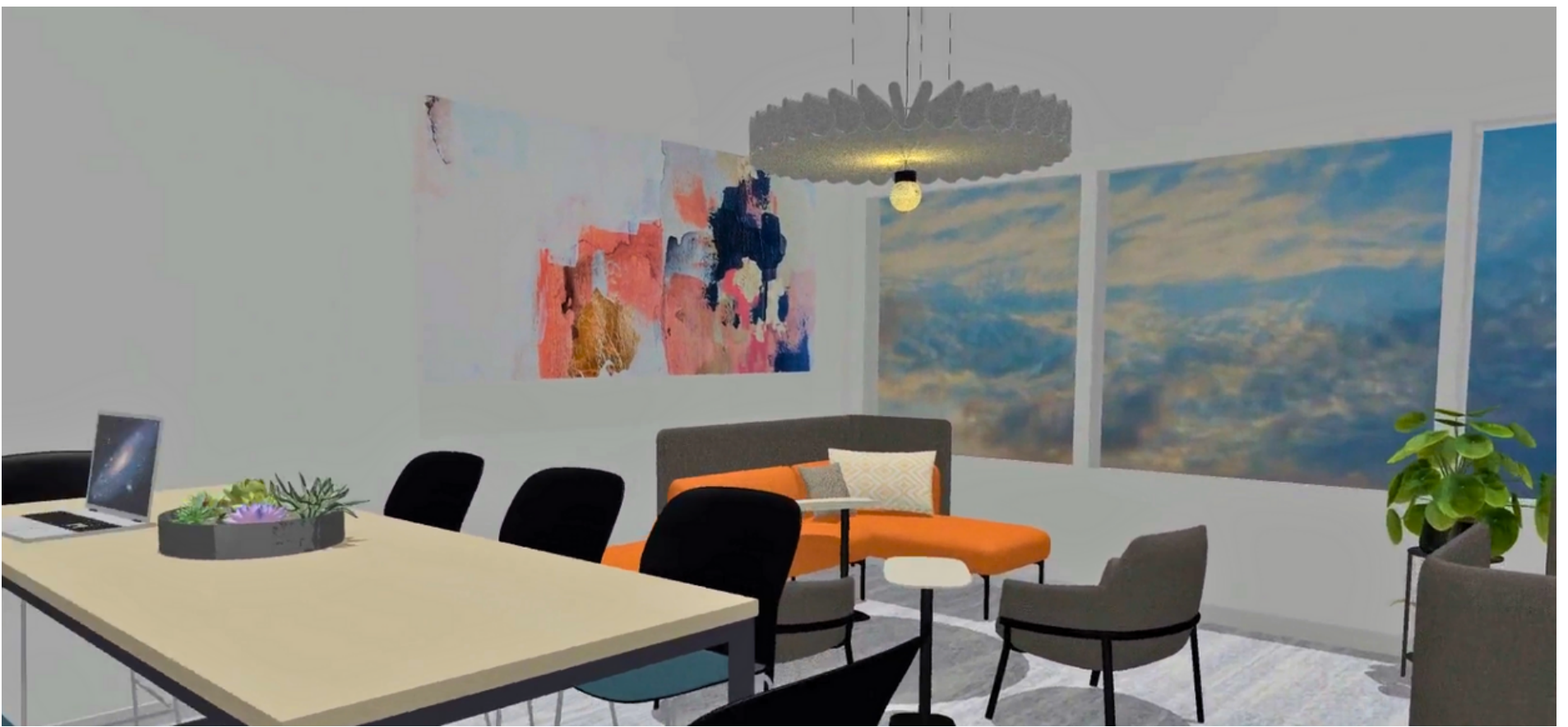


## Briefing Area and Breakout Rooms

In the breakout room, a [Haworth Cultivate Table](#) and [Maari Stools](#) signal an optimistic outlook on the future of work when colleagues can freely congregate around a table. Keeping with the subtle hints of the corporate colours of sea blue and amber that are noticeable throughout the office, the [Haworth Cabana Lounge Sofa](#), [Poppy Lounge Chairs](#), a [Jive Table](#) and a [Pip Side Table](#) double room capacity while cleverly delineating space. The [BuzziPleat](#) lighting seamlessly integrates into the room with added acoustical functionality and an aesthetically pleasing finish to the breakout room.

[Haworth's Planes Credenza](#) under the wall-mounted TV in the briefing area efficiently manages technology while providing a distinguished look when team members meet. Across the area, wood accents and earth tones come together to create a refined, welcoming environment. At the product level, [PopUp Tables](#) and [Maari Stools](#) alongside [Poppy Chairs](#) with tablets marry the residential with the workplace aesthetic.

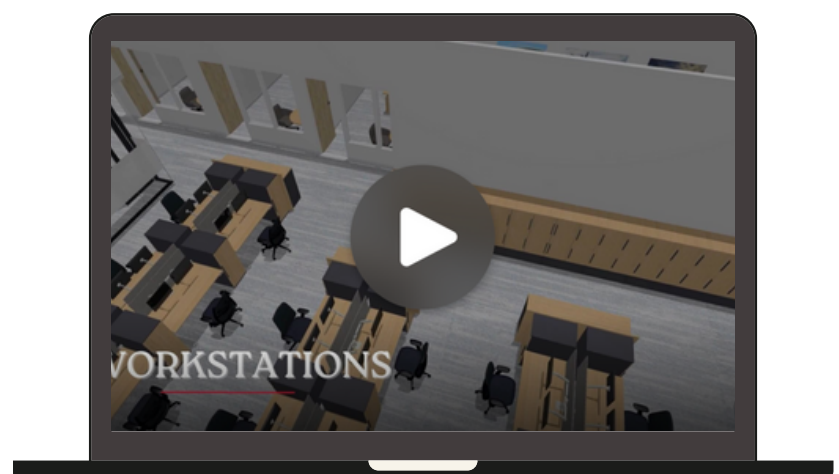




SEE THE NEW BAE SYSTEMS OFFICE SPACE IN A

## Rendering video fly-through

[Click here to view](#)





## Top Remarks

BAE Systems considers their new space a success, confident it will boost employee satisfaction and engagement once the team starts moving in. This new workspace is both a place where the architects and designers can do focused work in proximity and where teamwork and collaboration come easily.

As we near the project's end, our conversations with Natasha Ellsworth, the Project Manager at BAE Systems, unveiled her appreciation for the attention to detail displayed by the Office Interiors team throughout this endeavour. In her words, *"It is the attention to detail like this that makes your company stand out. The team always goes the extra mile to take care of us, and it's very appreciated."*

Ahona Saha  
Marketing Assistant  
Office Interiors